

---

**MODEL 1200**  
**WATER WHEEL TRANSPLANTER**

---

**OPERATING  
MANUAL**

***Rain-Flo Irrigation***

929 Reading Road  
East Earl, Pa 17519  
PH: 717-445-3000

# Table Of Contents

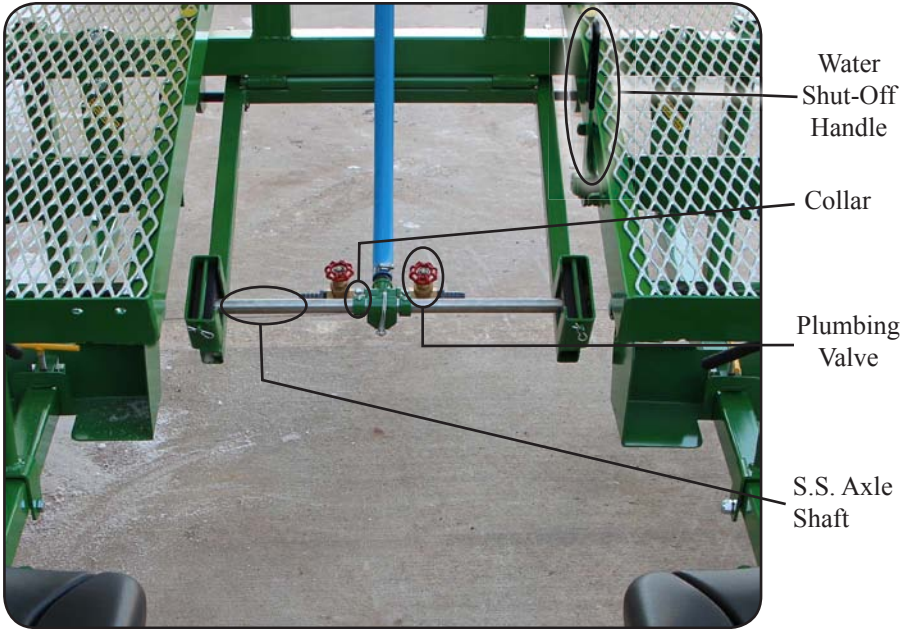
|                                      |       |
|--------------------------------------|-------|
| Axle, Tire.....                      | 3     |
| Features .....                       | 13    |
| Foot Rest.....                       | 4     |
| Helpful Tips.....                    | 14    |
| Options .....                        | 13    |
| Parts Breakdown, Description .....   | 10-12 |
| Parts Breakdown, Exploded Views..... | 6-9   |
| Planter Seat.....                    | 4     |
| Planting Wheel .....                 | 3     |
| Safety First .....                   | 2     |
| Super wheel.....                     | 5     |
| Trailer Combination .....            | 4     |
| Trouble Shooting .....               | 14    |
| Warranty .....                       | 13    |
| Water Flow .....                     | 3     |

# **!! Safety First !!**

---

- ⚠ No riders beyond the speed of 3 MPH. Be sure you read and understand all the precautions.
- ⚠ Keep people away when lifting and lowering the machine.
- ⚠ Be careful when turning around; machine is 8' long.
- ⚠ Do not crawl under the machine while it is lifted.
- ⚠ Do not adjust the machine when it is moving.
- ⚠ Do not stand on the machine.
- ⚠ Do not sit on machine except on designated seat.
- ⚠ Do not add chemicals to water tank unless planters wear hand protection.
- ⚠ Planter operators must keep their feet on foot rest when planting.
- ⚠ Tractor operator is responsible for extra worker(s) around machine.
- ⚠ Rain-Flo is not responsible for accidents if any should occur.

# PLANTING WHEEL ADJUSTMENTS



**(S.S. Axle Shaft)** To mount planting wheels and plumbing.

**(Collars-2)** To hold position of plumbing valves.

**(Plumbing Valves)** To adjust water flow.

**(Water Shut-Off Handle)** To shut off water supply.

One or two planting wheels can be used at a time. When using only one wheel, slide plumbing to one side of wheel or when using two wheels put plumbing in center. Planting wheels are set in position with two bolts in center of wheel and can be moved sideways on the axle shaft.

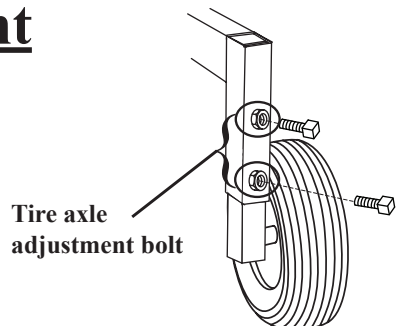
Planting wheels will flex up and down over uneven terrain.

**Caution;** Make sure planting wheels are not puncturing drip tape underneath plastic.

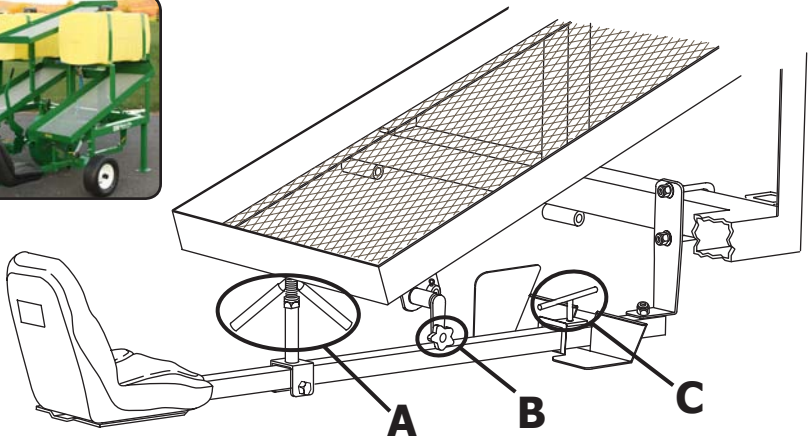
---

## Tire Axle Adjustment

Tire axles need to be adjusted for high beds. If more leg room is desired, shorten top link and lower axles.



# SEAT ADJUSTMENTS

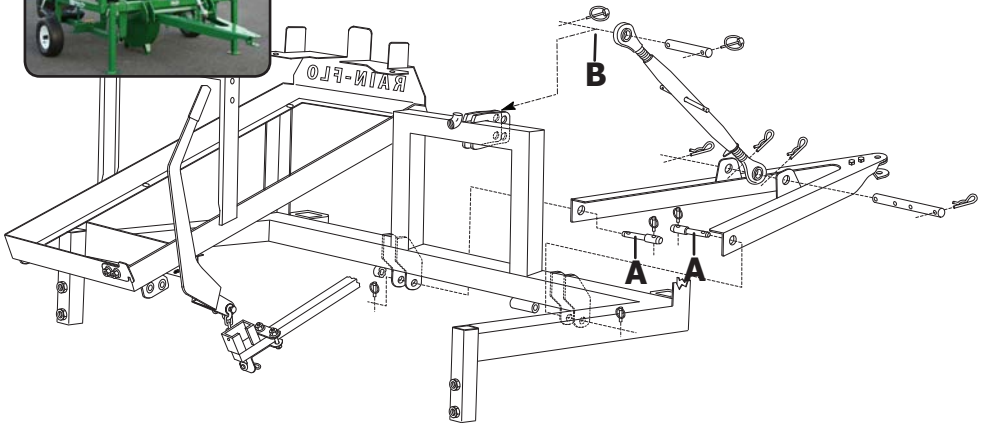


To adjust seat height, turn handles(A) till seat is in correct position. Turn handle(B) to adjust seat left-to-right position for planting comfort. To adjust foot rest, loosen handle (C) and slide foot rest to desired place.

## OPTIONAL TRAILER COMBINATION



Note; This can be added to the Model 1200 anytime.

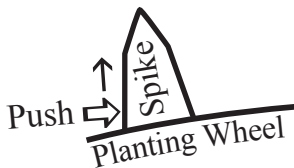


- (1)Reverse lift pins so that Cat II is on inside (A).
- (2)Install draw bar hitch by sliding onto the lifting pins (A).
- (3)Install lynch pins on the inside of Cat II lifting pin (A).
- (4)Unsnap lynch pins, remove top link pin, and install as shown above (B).

# OPTIONAL SUPER WHEEL

The super wheel is a very universal planting wheel. Spike size and spacing can be changed as preferred. A rubber grommet is used to close unused holes.

## Removing Spike



## Installing Spike



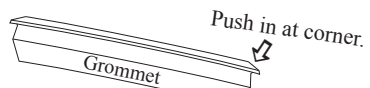
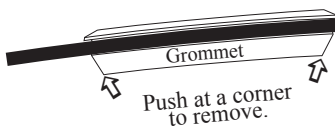
---

---

## How to install the grommet

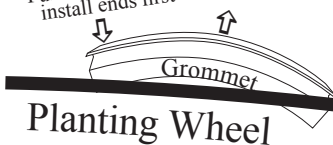
### **Step 1**

How grommet should look when installed.



### **Step 2**

Push at corner and install ends first



### **Step 3**

Firmly push down.

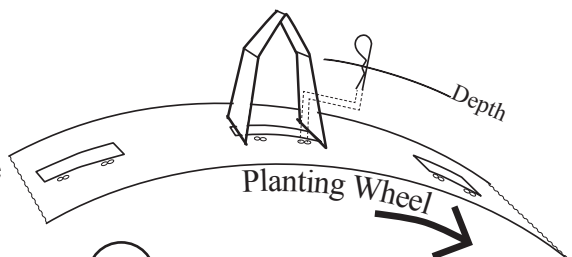


---

---

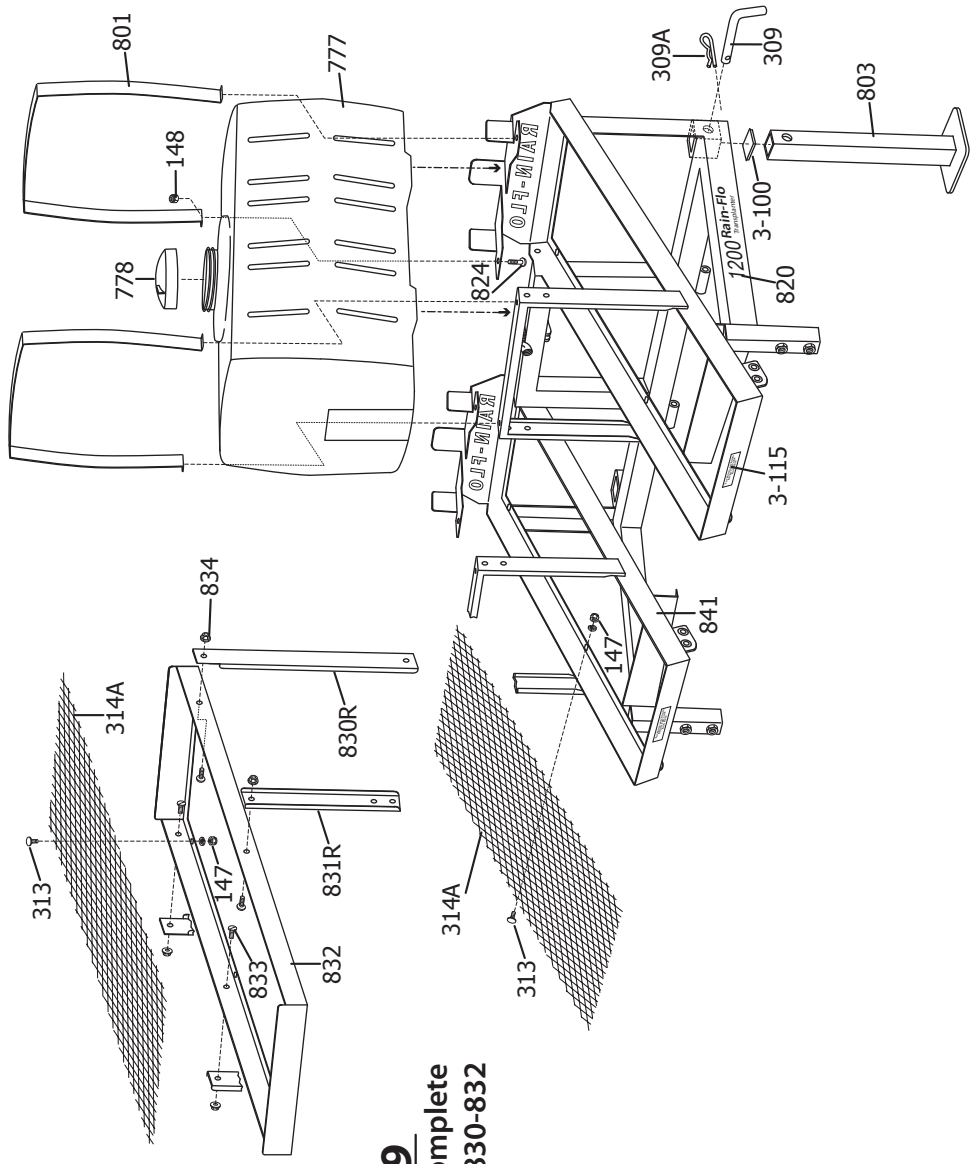
## How to install the lock pin

Note; lock pin is used in heavy or rocky soil conditions to avoid spike detaching.



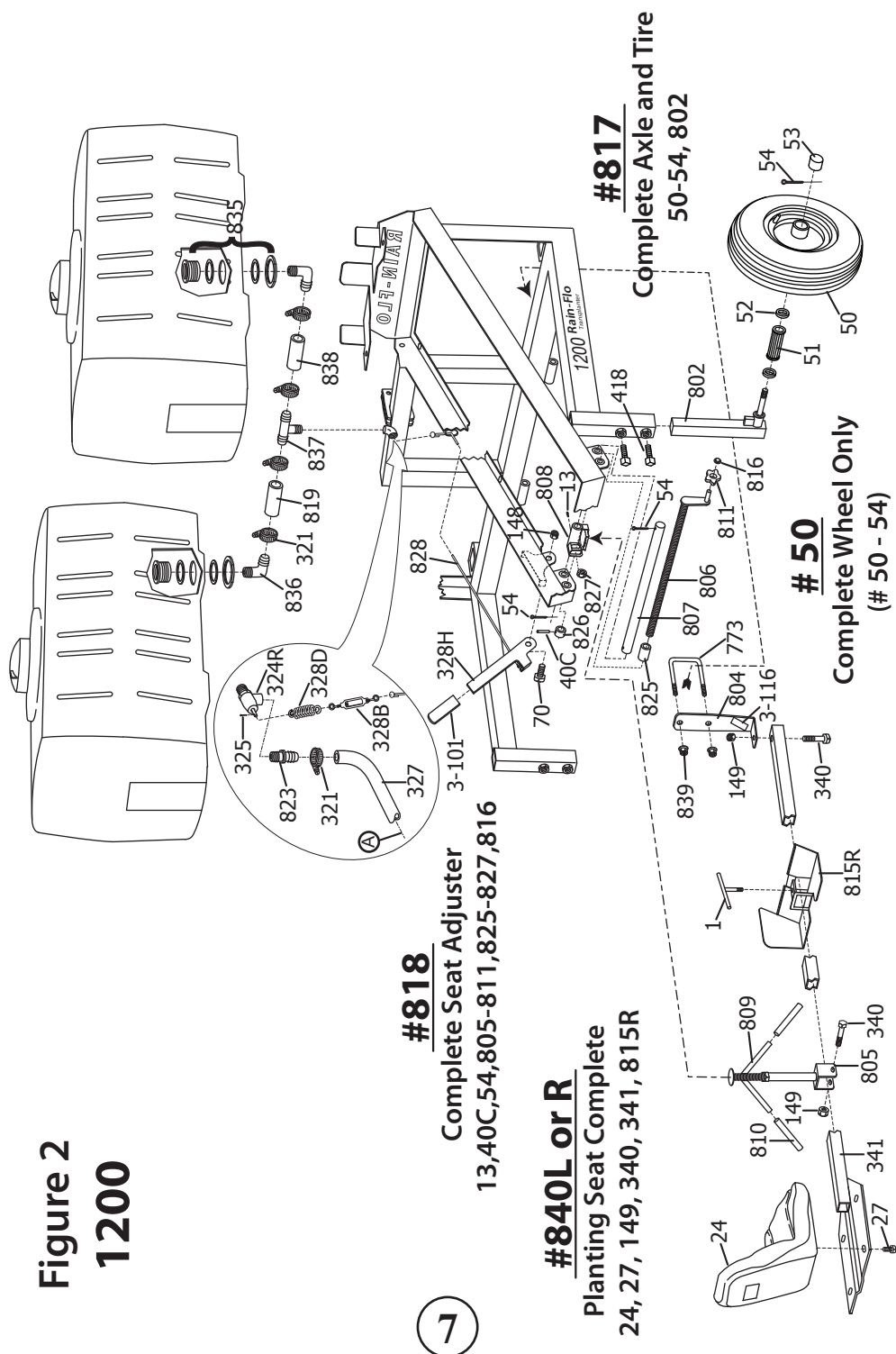
**Figure 1**  
**1200**

**#829**  
**Top Tray Complete**  
**313, 314A, 830-832**



# Figure 2

## 1200

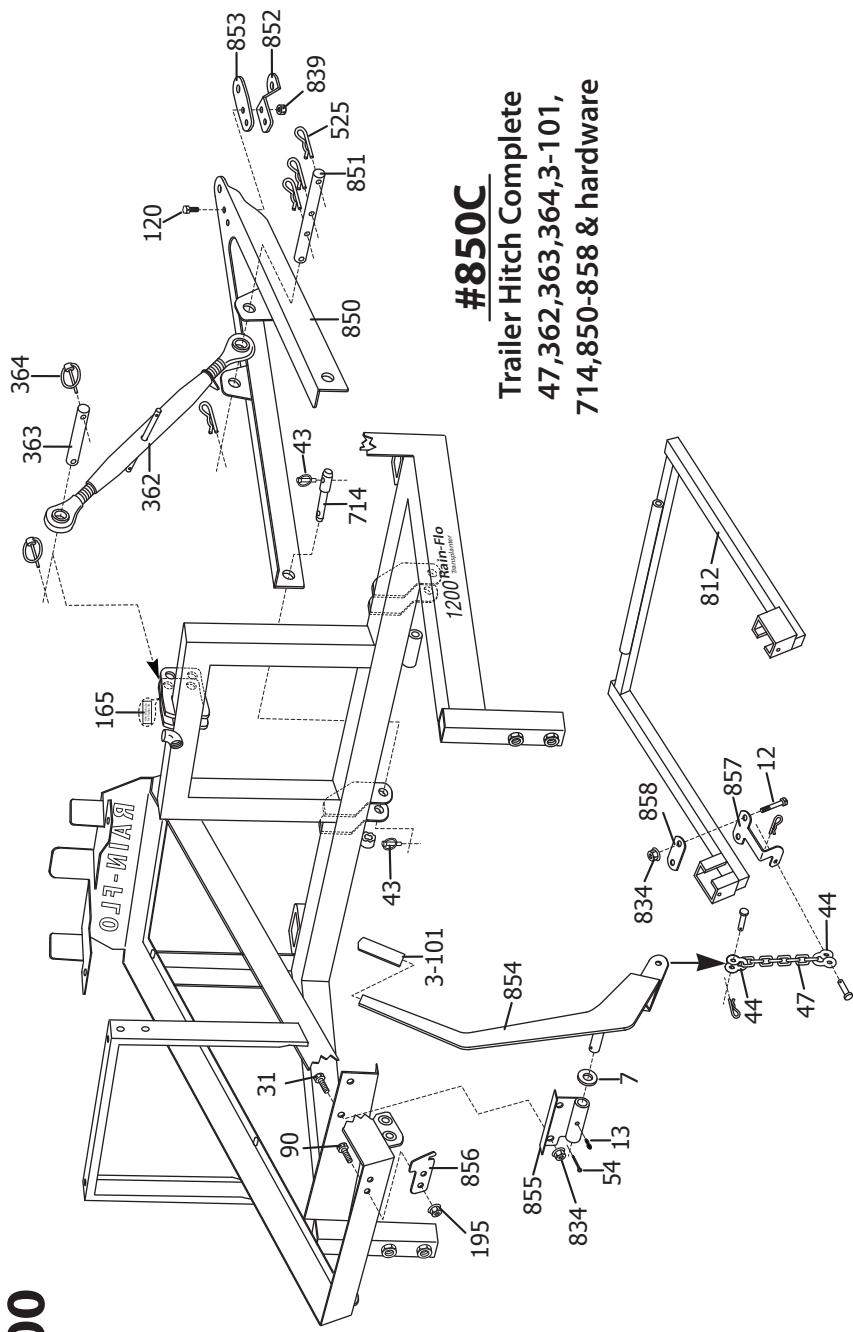




8



# 1200



# #850C

**Trailer Hitch Complete  
47,362,363,364,3-101,  
714,850-858 & hardware**

# ***Model 1200 Transplanter***

| <b>ITEM #</b>      | <b>DESCRIPTION</b>                           |
|--------------------|--|
| 1.....(2) .....    | Tee handle                                   |
| 5.....(2) .....    | 3/8" x 3/4" sq. head lock bolt               |
| 7.....(3) .....    | 1" SAE washer                                |
| 12.....(2) .....   | 3/8" x 2 1/2" bolt                           |
| 13.....(3) .....   | 1/4" NFT straight grease zert                |
| 24.....(2) .....   | Cushion seat                                 |
| 27.....(8) .....   | 5/16" x 1/2" seat bolt                       |
| 31.....(2) .....   | 3/8" x 1" hex bolt                           |
| 40C.....(2) .....  | 1/4" x 1" roll pin                           |
| 43.....(4) .....   | Lynch Pin HD 7/16"                           |
| 44.....(2) .....   | Chain shackle complete                       |
| 47.....            | 8 Link chain                                 |
| 50.....(2) .....   | Press wheel tire complete 16 x 6.50          |
| 51.....(2) .....   | Needle bearing 1" x 3" Long                  |
| 52.....(4) .....   | Bearing retainers                            |
| 53.....(2) .....   | Hub cap                                      |
| 54.....(2) .....   | 1/8" cotter pin                              |
| 70.....            | 3/8" x 1 1/4" bolt                           |
| 90.....(2) .....   | 5/16" x 3/4" hex bolt                        |
| 120.....(2) .....  | 1/2" x 1 1/2" hex bolt                       |
| 147.....(18) ..... | 1/4" nylon lock nut                          |
| 148.....(5) .....  | 3/8" nylon lock nut                          |
| 149.....(4) .....  | 1/2" nylon lock nut                          |
| 165.....(2) .....  | "Use Top Hole For Higher Lift" Label         |
| 195.....(2) .....  | 5/16" flange nut                             |
| 309.....(2) .....  | 1/2" quick pin                               |
| 309A.....(2) ..... | Removable safety pin for 1/2" diameter pin   |
| 313.....(18) ..... | 1/4" x 3/4" elevator bolt                    |
| 314A.....(3) ..... | Bottom expanded metal                        |
| 321.....(5) .....  | 1" hose clamps                               |
| 324R.....          | 1" planter valve, [New style for cable pull] |
| 325.....           | 1/16" x 3/4" cotter pin                      |
| 327.....           | 1" x 34" Hose extension                      |
| 328B.....          | Cable adjustment turn buckle                 |
| 328D.....          | Valves pring                                 |
| 328H.....          | Water shut-off handle                        |
| 340.....(4) .....  | 1/2" x 3 1/2" bolt                           |
| 341.....(2) .....  | Seat mounting bar                            |
| 352.....(2) .....  | Bushing locking pin                          |
| 353.....(2) .....  | Safety pin                                   |
| 354.....(2) .....  | UHMW block bushing                           |

# ***Model 1200 Transplanter***

| <b>ITEM #</b>      | <b>DESCRIPTION</b>                         |
|--------------------|--|
| 355.....           | Planting wheel (specify spacing & spike)   |
| 356..... (2) ..... | Plumbing collar                            |
| 358.....           | Snap pin                                   |
| 360.....           | 3/8" x 1" sq. head lock bolt               |
| 361.....           | Two valve plumbing assembly                |
| 361A.....          | Two valve plumbing tee adapter only        |
| 362.....           | Top link                                   |
| 363.....           | Top link pin                               |
| 364..... (2) ..... | Lynch pin 1/4"                             |
| 391.....           | Weld-on wheel spikes (specify size)        |
| 392.....           | Snap-on wheel spikes (specify size)        |
| 418..... (4) ..... | 5/8" x 1 1/2" set screw                    |
| 525..... (4) ..... | Safety pin                                 |
| 714..... (2) ..... | Category I and II Lift pin                 |
| 773..... (2) ..... | 1/2" x 4" x 3-1/16" Center filler 'U' bolt |
| 777..... (2) ..... | 50 gallon water tank                       |
| 778..... (2) ..... | Tank cap only                              |
| 801..... (2) ..... | Tank bands                                 |
| 802..... (2) ..... | Tire axle                                  |
| 803..... (2) ..... | Support stand                              |
| 804..... (2) ..... | Seat bolt-on front bracket                 |
| 805..... (2) ..... | Seat adjuster bottom tube assembly         |
| 806..... (2) ..... | Threaded rod with hand crank               |
| 807..... (2) ..... | Seat adjustment 1" rod                     |
| 808..... (2) ..... | Seat adjustment hanger                     |
| 809..... (2) ..... | Seat adjuster upright threaded rod         |
| 810..... (4) ..... | Seat adjuster handle rubber grip           |
| 811..... (2) ..... | Seat adjuster side knob                    |
| 812.....           | Water wheel yoke                           |
| 812C.....          | Wheel mounting yoke assembly complete      |
| 813.....           | Water wheel yoke; SS shaft                 |
| 814.....           | Water wheel yoke hinge pin                 |
| 815L or R .....    | Seat foot rest with 'T' handle adjust      |
| 816..... (2) ..... | Seat adjuster side knob cap                |
| 817..... (2) ..... | Complete axle with tire                    |
| 818..... (2) ..... | Complete seat adjuster                     |
| 819.....           | 1" Hose Extension                          |
| 820..... (2) ..... | Model 1200 side decal                      |
| 821.....           | Model 1200 serial number label             |
| 822.....           | Rain-Flo small oval logo                   |
| 823.....           | 1" Insert Male Adapter                     |

# ***Model 1200 Transplanter***

| <b>ITEM #</b>         | <b>DESCRIPTION</b>                         |
|-----------------------|--|
| 824..... (4) .....    | 3/8" x 1 3/4" Carriage Bolt                |
| 825..... (2) .....    | Seat adjuster threaded rod spacer          |
| 826..... (2) .....    | Adjuster threaded rod collar w/roll pin    |
| 827..... (2) .....    | 3/4" x 6" Acme thread nut                  |
| 828.....              | Model 1200 water shut-off cable            |
| 829.....              | Model 1200 top tray complete               |
| 830L or R .....       | Top tray long bracket                      |
| 831L or R .....       | Top tray short bracket                     |
| 832.....              | Top tray frame only                        |
| 833..... (4) .....    | 3/8" x 3/4" slotted pan head bolt          |
| 834..... (8) .....    | 3/8" Flange nut                            |
| 835..... (2) .....    | 1 " Tank Adapter                           |
| 836..... (2) .....    | PVC insert barb x male thread 90 ell       |
| 837.....              | 1" ins x ins x male thread tee             |
| 838.....              | 1" hose extension                          |
| 839..... (6) .....    | 1/2" flange nut                            |
| 840L or R .....       | Planting seat complete                     |
| 841.....              | Model 1200 transplanter frame only         |
| 842..... (3) .....    | 3/4" male adpter MPT x Insert              |
| 843..... (2) .....    | 3/4" brass gate valve                      |
| 844..... (2) .....    | 3/4" short nipple                          |
| 850.....              | Trailer tongue                             |
| 850C.....             | Trailer hitch complete                     |
| 851.....              | Trailer planter tongue pin                 |
| 852.....              | Trailer tongue bottom drawbar plate        |
| 853.....              | Trailer tongue drawbar top flat plate      |
| 854.....              | Trailer fork lift handle                   |
| 855.....              | Trailer lift handle mounting bracket       |
| 856.....              | Trailer handle lift lock in up position    |
| 857.....              | Model 1200 trailer fork bracket            |
| 858.....              | Model 1200 trailer fork bracket flat plate |
| 3-100 ..... (2) ..... | Planter stand rubber cap                   |
| 3-101 ..... (2) ..... | Planter water shut off handle rubber grip  |
| 3-115 ..... (2) ..... | "For More Leg Room" ..... Label            |
| 3-116 ..... (2) ..... | "Bolt Seat Tubing On" ..... Label          |

# Features

- Capability of 8" to 24" row spacing and one or two planting wheels. (Standard)
- Two slant galvanized expanded metal trays.
- Specialty designed tanks so tractor operator can see people planting. Easier to communicate.
- Two 50 gallon tanks. (Total 100 gallons)
- Quick change water wheel setup.
- Easy seat adjustment on the go for comfort.
- Easy foot rest adjustment.
- Will plant minimum 62" row centers.
- Quality powder coated baked-on paint.

# Options

- \* Optional super wheel (see page 5).
- \* Optional top tray.
- \* Optional trailer\3-point combination

# Warranty

---

All Rain-Flo Water Wheel Transplanters have a two year warranty against defects in material and workmanship.

If any part found defective, return the defective part with Serial No. of the machine. If Rain-Flo finds it defective, it will be replaced or repaired at no charge.

Call Customer Service at (717) 445-3000. Fax (717) 445-8304

# Helpful Tips

For better crop stand, planting operators should firmly press plants into water-filled hole. If plenty of water is used, potted plants will be sealed and do not need to be covered with soil.

When using starter fertilizer, it needs to be agitated. Fertilizer is heavier than water and will settle to the bottom of the tank, resulting in possibly burning or killing the first couple hundred plants.

For faster planting, operators may put one tray of plants on their lap.

If soil does not paste on planting wheel, this machine can also be used on bare soil.

## TROUBLESHOOTING

---

- 1. PROBLEM:** Planter is used on bare soil, and soil tends to paste onto planting wheel.

**SOLUTION:** \* Soil is too wet or wheel needs to be cleaned or repainted.  
\* Stretch a tire intertube over the wheel, leaving some slack between the spikes.

- 2. PROBLEM:** Not enough leg room.

**SOLUTION:** \* Adjust foot rest. See page 4.  
\* Adjust top link and axle. See page 3.

- 3. PROBLEM:** Tractor can't lift planter.

**SOLUTION:** \* Optional trailer hitch available or use less water in tanks.

**~2015 Edition~**

**Rain-Flo Irrigation**  
**(717) 445-3000**