



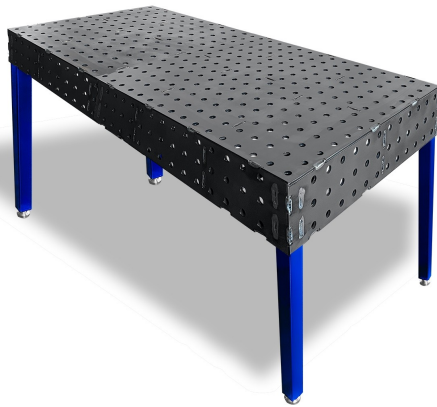
EliteMetalTools.com

281-241-9504

insidesales@elitemetaltools.com

M-F 8:00 AM - 7:30 PM EST

## Baileigh Industrial 36" x 72" Welding Table WJT-2436UW-16 BA9-1232669



~~\$4,500.2~~

**\$3,662** Save \$838.2!

As low as \$119/mo through Elite Metal Tools financing partners.



FREE SHIPPING



Use your phone to take a picture of this QR Code to learn more!

\*Images may display items not included with purchase

### Specifications

Manufacturer	Baileigh Industrial
EMT ID	17908
SKU	BA9-1232669
UPC	731325080889
Shipping Method	LTL Freight
Weight	289 lb
Dimensions	73 x 38 x 10 in
Warranty	1 Year (Parts)



- Table Load Capacity: 2 Tons
- Table Height: 36"
- Number of Mounting Surfaces: 5
- Mounting Hole Size: 16mm

### Free Shipping

Free shipping on ALL machines throughout the contiguous United States to all commercial locations.

### Product Selection

A wide selection of machinery for you to compare brands and features. Find the right machine for your job.



### Knowledgeable Staff

When you have questions, we have the staff that will help you find the answer and equipment that best fits your needs.

### Customer Service

Fast and friendly service centered around creating a positive experience.

### Price Matching

Our prices are highly competitive. However, if you find an item cheaper somewhere else, we will match that price. Contact us for details.