

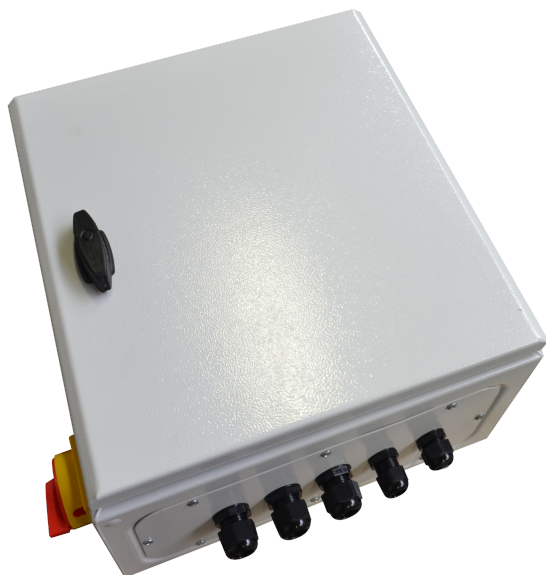


EliteMetalTools.com

281-241-9504

insidesales@elitemetaltools.com

M-F 8:00 AM - 7:30 PM EST



\*Images may display items not included with purchase

## MPI Single Wave 2 Channel ElectroPermanent Chuck Control Unit with U19 Controller EPCU-20SW

~~\$4,564~~

**\$4,226** Save \$338!

As low as \$137/mo through Elite Metal Tools financing partners.



Use your phone to take a picture of this QR Code to learn more!

### Specifications

Manufacturer	MPI
EMT ID	17615
SKU	EPCU-20SW
Shipping Method	Ground
Weight	30 lb
Dimensions	21 × 14 × 14 in



Magnets | Material Handling  
Electronic Inspection | Service

- Main Operating Voltage: 200-460V
- Main Operating Frequency: 50/60Hz
- Operating Temperature: 32-122°F
- Maximum Relative Humidity: 90%

### Free Shipping

Free shipping on ALL machines throughout the contiguous United States to all commercial locations.

### Product Selection

A wide selection of machinery for you to compare brands and features. Find the right machine for your job.



### Knowledgeable Staff

When you have questions, we have the staff that will help you find the answer and equipment that best fits your needs.

### Customer Service

Fast and friendly service centered around creating a positive experience.

### Price Matching

Our prices are highly competitive. However, if you find an item cheaper somewhere else, we will match that price. Contact us for details.

elitemetaltools.com - 09/16/2025