

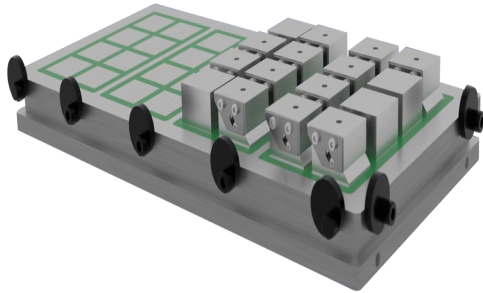


EliteMetalTools.com

281-241-9504

insidesales@elitemetaltools.com

M-F 8:00 AM - 7:30 PM EST



MPI 12"x18" 24 Poles 170N Holding Force ElectroPermanent Mastermill Milling Chuck MM-50-300430-EP

~~\$6,592~~

\$6,263 Save \$329!

As low as \$203/mo through Elite Metal
Tools financing partners.



Use your phone to take
a picture of this QR
Code to learn more!

*Images may display items not included with purchase

Specifications

Manufacturer	MPI
EMT ID	17537
SKU	MM-50-300430-EP
Shipping Method	Ground
Weight	120 lb
Dimensions	18 x 18 x 13 in



Magnets | Material Handling
Electronic Inspection | Service

- Chuck Size: 12" x 18"
- Holding force: 170 N/cm² / 246 lbs/cm²
- Min. Workpiece Size: 50mm x 110mm x 20mm / 2" x 4.3" x 0.787"
- Regrinding limit: 6mm / .236"

Free Shipping

Free shipping on ALL machines throughout the
contiguous United States to all commercial
locations.

Product Selection

A wide selection of machinery for you to
compare brands and features. Find the right
machine for your job.



Knowledgeable Staff

When you have questions, we have the staff
that will help you find the answer and
equipment that best fits your needs.

Customer Service

Fast and friendly service centered around
creating a positive experience.

Price Matching

Our prices are highly competitive. However, if
you find an item cheaper somewhere else, we
will match that price. Contact us for details.

elitemetaltools.com - 08/10/2025