

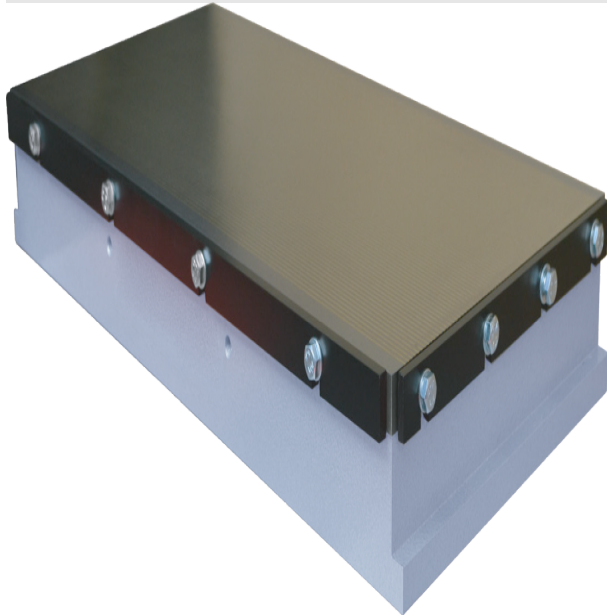


EliteMetalTools.com

281-241-9504

insidesales@elitemetaltools.com

M-F 8:00 AM - 7:30 PM EST



*Images may display items not included with purchase

MPI 12"x28" 110N Holding Force Electromagnet Transverse Fine Pole Surface Grinding Chuck EMTP-300700-SGC

\$8,875

\$7,948 Save \$927!

As low as \$258/mo through Elite Metal
Tools financing partners.



Use your phone to take
a picture of this QR
Code to learn more!

Specifications

Manufacturer	MPI
EMT ID	17518
SKU	EMTP-300700-SGC
Shipping Method	LTL Freight
Weight	270 lb
Dimensions	34 x 18 x 12 in



Magnets | Material Handling
Electronic Inspection | Service

- Chuck Size: 12" x 28"
- Holding force: 110N/cm² / 159lbs/in²
- Min. Workpiece Size: 25mm x 25mm x 3mm / 1" x 1" x .12"
- Regrinding limit: 6 mm / .236"

Free Shipping

Free shipping on ALL machines throughout the contiguous United States to all commercial locations.

Product Selection

A wide selection of machinery for you to compare brands and features. Find the right machine for your job.



Knowledgeable Staff

When you have questions, we have the staff that will help you find the answer and equipment that best fits your needs.

Customer Service

Fast and friendly service centered around creating a positive experience.

Price Matching

Our prices are highly competitive. However, if you find an item cheaper somewhere else, we will match that price. Contact us for details.

elitemetaltools.com - 08/02/2025