

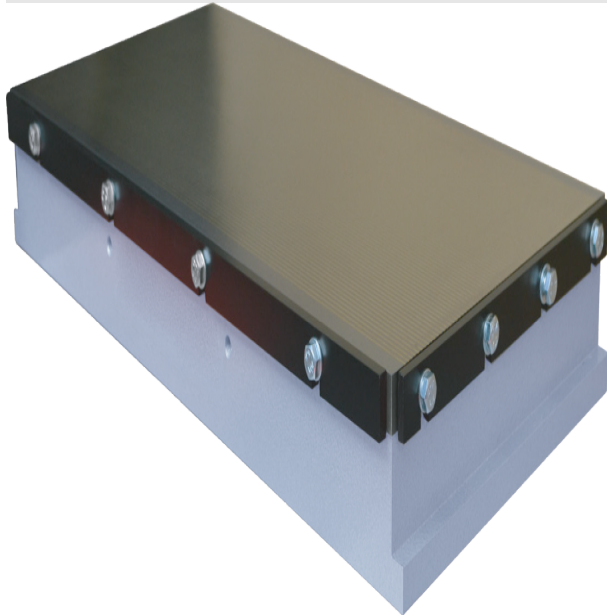


EliteMetalTools.com

281-241-9504

insidesales@elitemetaltools.com

M-F 8:00 AM - 7:30 PM EST



\*Images may display items not included with purchase

## MPI 10"x24" 110N Holding Force Electromagnet Transverse Fine Pole Surface Grinding Chuck EMTP-250600-SGC

\$6,794

**\$6,101** Save \$693!

As low as \$198/mo through Elite Metal  
Tools financing partners.



Use your phone to take  
a picture of this QR  
Code to learn more!

### Specifications

Manufacturer	MPI
EMT ID	17516
SKU	EMTP-250600-SGC
Shipping Method	LTL Freight
Weight	210 lb
Dimensions	30 × 14 × 12 in



Magnets | Material Handling  
Electronic Inspection | Service

- Chuck Size: 10" x 24"
- Holding force: 110N/cm<sup>2</sup> / 159lbs/in<sup>2</sup>
- Min. Workpiece Size: 25mm x 25mm x 3mm / 1" x 1" x .12"
- Regrinding limit: 6 mm / .236"

### Free Shipping

Free shipping on ALL machines throughout the contiguous United States to all commercial locations.

### Product Selection

A wide selection of machinery for you to compare brands and features. Find the right machine for your job.



### Knowledgeable Staff

When you have questions, we have the staff that will help you find the answer and equipment that best fits your needs.

### Customer Service

Fast and friendly service centered around creating a positive experience.

### Price Matching

Our prices are highly competitive. However, if you find an item cheaper somewhere else, we will match that price. Contact us for details.

elitemetaltools.com - 02/19/2026