



EliteMetalTools.com

281-241-9504

insidesales@elitemetaltools.com

M-F 8:00 AM - 7:30 PM EST

MPI 8"x18" 110N Holding Force Electromagnet Transverse Fine Pole Surface Grinding Chuck EMTP-200450-SGC

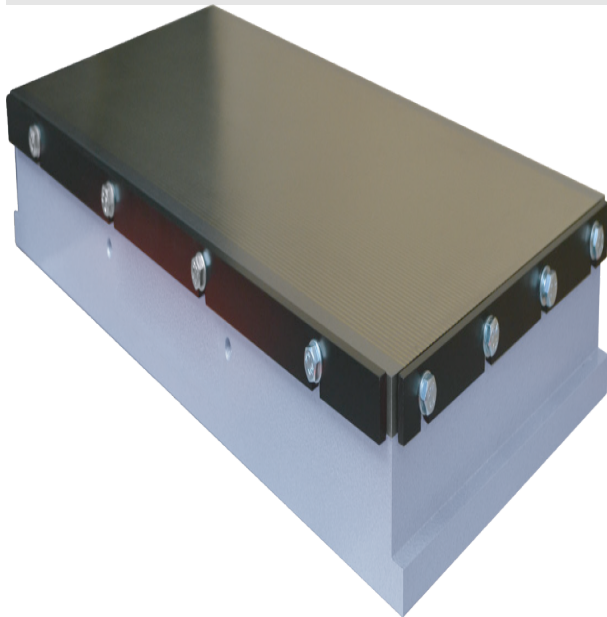
~~\$4,842~~

\$4,385 Save \$457!

As low as \$142/mo through Elite Metal Tools financing partners.



Use your phone to take a picture of this QR Code to learn more!



*Images may display items not included with purchase

Specifications

Manufacturer	MPI
EMT ID	17511
SKU	EMTP-200450-SGC
Shipping Method	LTL Freight
Weight	130 lb
Dimensions	26 x 12 x 12 in



Magnets | Material Handling
Electronic Inspection | Service

- Chuck Size: 8" x 18"
- Holding force: 110N/cm² / 159lbs/in²
- Min. Workpiece Size: 25mm x 25mm x 3mm / 1" x 1" x .12"
- Regrinding limit: 6 mm / .236"

Free Shipping

Free shipping on ALL machines throughout the contiguous United States to all commercial locations.



Product Selection

A wide selection of machinery for you to compare brands and features. Find the right machine for your job.

Knowledgeable Staff

When you have questions, we have the staff that will help you find the answer and equipment that best fits your needs.

Customer Service

Fast and friendly service centered around creating a positive experience.

Price Matching

Our prices are highly competitive. However, if you find an item cheaper somewhere else, we will match that price. Contact us for details.