



EliteMetalTools.com

281-241-9504

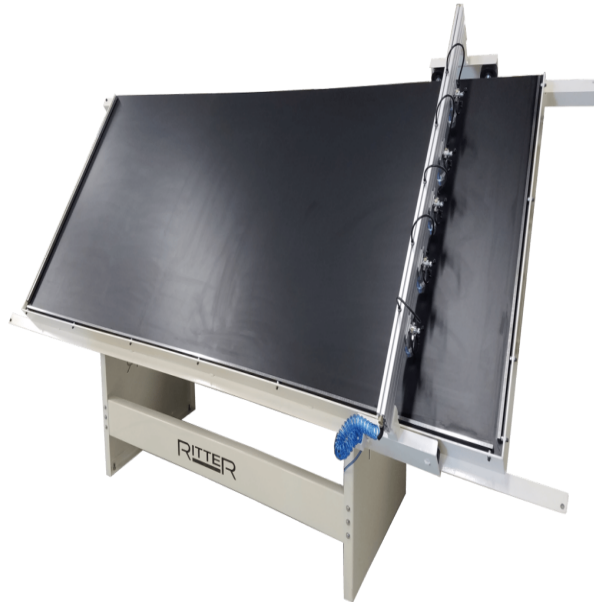
insidesales@elitemetaltools.com

M-F 8:00 AM - 7:30 PM EST

## Ritter Machinery 5' x 12' Face Frame Assembly Easel R200E/A

**\$11,275**

As low as \$366/mo through Elite Metal Tools financing partners.



\*Images may display items not included with purchase



Use your phone to take a picture of this QR Code to learn more!

### Specifications

Manufacturer	Ritter Machinery
EMT ID	14917
SKU	R200E/A
Shipping Method	Flatbed
Weight	1,250 lb
Dimensions	169 x 68 x 30 in
Country of Origin	United States of America

# RITTER<sup>®</sup>

MACHINERY COMPANY

- 5' x 12' Face Frame Table
- 1" Thick Formica Surfaced Table
- 3" I-Beam Easel Frame
- Hold Down Beam with (5) Adjustable Hold Down Cylinders

### Free Shipping

Free shipping on ALL machines throughout the contiguous United States to all commercial locations.



### Product Selection

A wide selection of machinery for you to compare brands and features. Find the right machine for your job.

### Knowledgeable Staff

When you have questions, we have the staff that will help you find the answer and equipment that best fits your needs.

### Customer Service

Fast and friendly service centered around creating a positive experience.

### Price Matching

Our prices are highly competitive. However, if you find an item cheaper somewhere else, we will match that price. Contact us for details.