



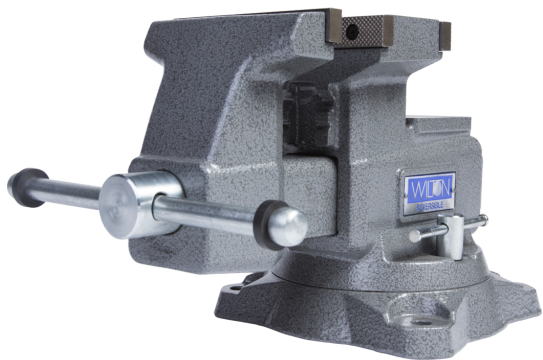
EliteMetalTools.com

281-241-9504

insidesales@elitemetaltools.com

M-F 8:00 AM - 7:30 PM EST

Wilton Reversible Bench Vise 5-1/2" Jaw Width with 360° Swivel Base 28821



~~\$529.09~~

\$325 Save \$204.09!



Use your phone to take a picture of this QR Code to learn more!

*Images may display items not included with purchase

Specifications

Manufacturer	Wilton
EMT ID	12698
SKU	WL9-28821
UPC	731325749618
Shipping Method	Ground
Weight	51.9 lb
Dimensions	17.3 × 10.2 × 9.4 in
Country of Origin	China



- 360° swivel base
- Built-in pipe jaws handle a range of pipe sizes
- Dual lockdowns and a 360° swivel base
- Jaw opening expands to an incredible 10-3/4" when reversed
- Large anvil work surface

Free Shipping

Free shipping on ALL machines throughout the contiguous United States to all commercial locations.

Product Selection

A wide selection of machinery for you to compare brands and features. Find the right machine for your job.



Knowledgeable Staff

When you have questions, we have the staff that will help you find the answer and equipment that best fits your needs.

Customer Service

Fast and friendly service centered around creating a positive experience.

Price Matching

Our prices are highly competitive. However, if you find an item cheaper somewhere else, we will match that price. Contact us for details.

elitemetaltools.com - 02/02/2026