



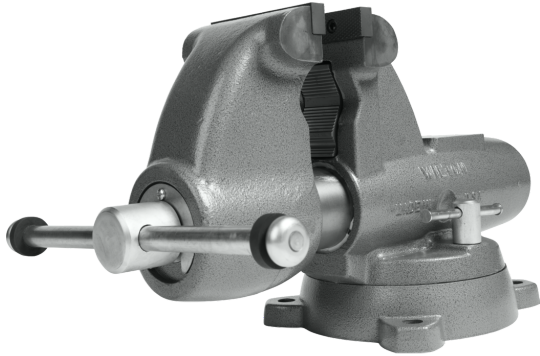
EliteMetalTools.com

281-241-9504

insidesales@elitemetaltools.com

M-F 8:00 AM - 7:30 PM EST

## Wilton Combination Pipe And Bench 5" Jaw Round Channel Vise with Swivel Base 28827



~~\$2,957.99~~

**\$1,821.99** Save \$1,136!

As low as \$59/mo through Elite Metal Tools financing partners.



Use your phone to take a picture of this QR Code to learn more!

\*Images may display items not included with purchase

### Specifications

Manufacturer	Wilton
EMT ID	11161
SKU	WL9-28827
UPC	731325760439
Shipping Method	LTL Freight
Weight	115.7 lb
Dimensions	24.5 × 11.5 × 15.5 in
Country of Origin	United States of America



- Hardened steel replaceable jaw inserts are machine serrated for a safe and secure grip under maximum torque
- Large anvil designed to take a beating while forming and shaping materials
- Locking swivel base with double lockdowns for non-slip hold in any position
- Longer spindle nut ensures smooth movement and a stronger straight-line pull
- Massive cast iron vise body is virtually indestructible, weighing up to 30% more than competing models

### Free Shipping

Free shipping on ALL machines throughout the contiguous United States to all commercial locations.

### Product Selection

A wide selection of machinery for you to compare brands and features. Find the right machine for your job.



### Knowledgeable Staff

When you have questions, we have the staff that will help you find the answer and equipment that best fits your needs.

### Customer Service

Fast and friendly service centered around creating a positive experience.

### Price Matching

Our prices are highly competitive. However, if you find an item cheaper somewhere else, we will match that price. Contact us for details.

elitemetaltools.com - 09/14/2025