

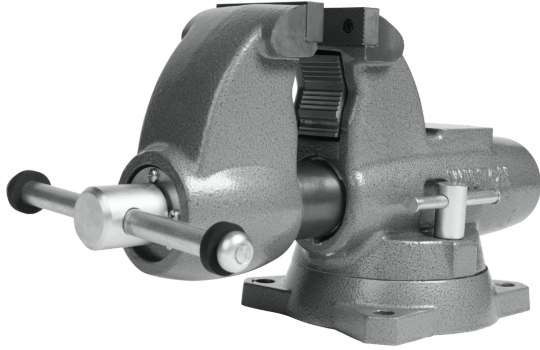


EliteMetalTools.com

281-241-9504

insidesales@elitemetaltools.com

M-F 8:00 AM - 7:30 PM EST



## Wilton Combination Pipe And Bench 3-1/2\"/> Jaw Round Channel Vise with Swivel Base 28825

\$1,639.98

**\$1,025** Save \$614.98!

As low as \$33/mo through Elite Metal  
Tools financing partners.



Use your phone to take  
a picture of this QR  
Code to learn more!

\*Images may display items not included with purchase

### Specifications

Manufacturer	Wilton
EMT ID	11159
SKU	WL9-28825
UPC	731325760415
Shipping Method	Ground
Weight	50.4 lb
Dimensions	17 × 7.9 × 9.1 in
Country of Origin	United States of America



- Hardened steel replaceable jaw inserts are machine serrated for a safe and secure grip under maximum torque
- Large anvil designed to take a beating while forming and shaping materials
- Locking swivel base with double lockdowns for non-slip hold in any position
- Longer spindle nut ensures smooth movement and a stronger straight-line pull
- Massive cast iron vise body is virtually indestructible, weighing up to 30% more than competing models

### Free Shipping

Free shipping on ALL machines throughout the contiguous United States to all commercial locations.

### Product Selection

A wide selection of machinery for you to compare brands and features. Find the right machine for your job.



### Knowledgeable Staff

When you have questions, we have the staff that will help you find the answer and equipment that best fits your needs.

### Customer Service

Fast and friendly service centered around creating a positive experience.

### Price Matching

Our prices are highly competitive. However, if you find an item cheaper somewhere else, we will match that price. Contact us for details.

elitemetaltools.com - 12/16/2025