

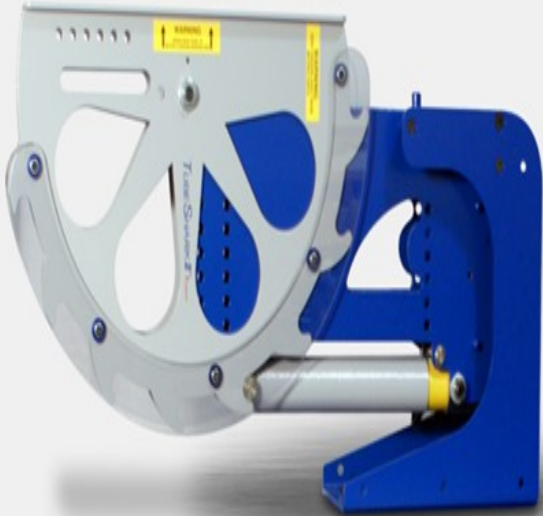


EliteMetalTools.com

281-241-9504

insidesales@elitemetaltools.com

M-F 8:00 AM - 7:30 PM EST



*Images may display items not included with purchase

Specifications

Manufacturer	TubeShark
EMT ID	17242
SKU	TSA-2-1-0007
Shipping Method	LTL Freight
Weight	340 lb
Dimensions	48 x 52 x 48 in

TubeShark 110V Single Phase Pipe & Tube Bender Bench Mount Model with Commercial Electric/Hydraulic Power Unit TSA-2-1-0007

\$5,499

As low as \$178/mo through Elite Metal Tools financing partners.



Use your phone to take a picture of this QR Code to learn more!



- Round Capacity: 1/2" to 2"
- Square Capacity: 1/2" to 1 1/2"
- Quality Bends up to 180°
- Motor: 110V Single Phase

Free Shipping

Free shipping on ALL machines throughout the contiguous United States to all commercial locations.

Product Selection

A wide selection of machinery for you to compare brands and features. Find the right machine for your job.



Knowledgeable Staff

When you have questions, we have the staff that will help you find the answer and equipment that best fits your needs.

Customer Service

Fast and friendly service centered around creating a positive experience.

Price Matching

Our prices are highly competitive. However, if you find an item cheaper somewhere else, we will match that price. Contact us for details.

elitemetaltools.com - 05/19/2024