



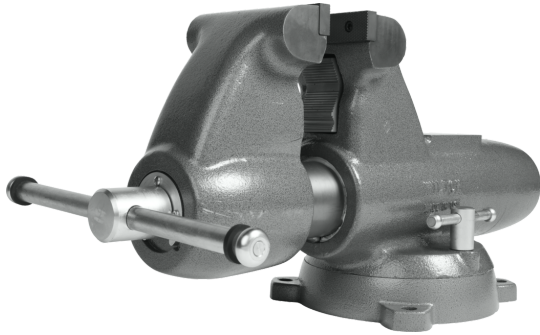
EliteMetalTools.com

281-241-9504

insidesales@elitemetaltools.com

M-F 8:00 AM - 7:30 PM EST

Wilton Combination Pipe And Bench 6" Jaw Round Channel Vise with Swivel Base 28828



\$4,334

\$2,660.99

Save \$1,673.01!

As low as \$86/mo through Elite Metal Tools financing partners.

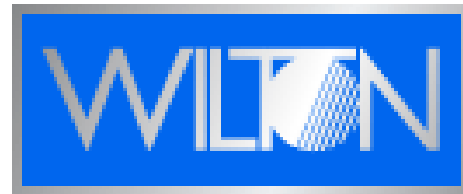


Use your phone to take a picture of this QR Code to learn more!

*Images may display items not included with purchase

Specifications

Manufacturer	Wilton
EMT ID	11162
SKU	WL9-28828
UPC	731325762747
Shipping Method	LTL Freight
Weight	199.7 lb
Dimensions	27.5 × 13.4 × 15.7 in
Country of Origin	United States of America



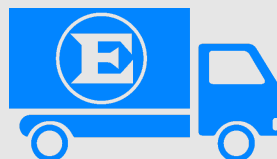
- Hardened steel replaceable jaw inserts are machine serrated for a safe and secure grip under maximum torque
- Large anvil designed to take a beating while forming and shaping materials
- Locking swivel base with double lockdowns for non-slip hold in any position
- Longer spindle nut ensures smooth movement and a stronger straight-line pull
- Massive cast iron vise body is virtually indestructible, weighing up to 30% more than competing models

Free Shipping

Free shipping on ALL machines throughout the contiguous United States to all commercial locations.

Product Selection

A wide selection of machinery for you to compare brands and features. Find the right machine for your job.



Knowledgeable Staff

When you have questions, we have the staff that will help you find the answer and equipment that best fits your needs.

Customer Service

Fast and friendly service centered around creating a positive experience.

Price Matching

Our prices are highly competitive. However, if you find an item cheaper somewhere else, we will match that price. Contact us for details.

elitemetaltools.com - 05/27/2024